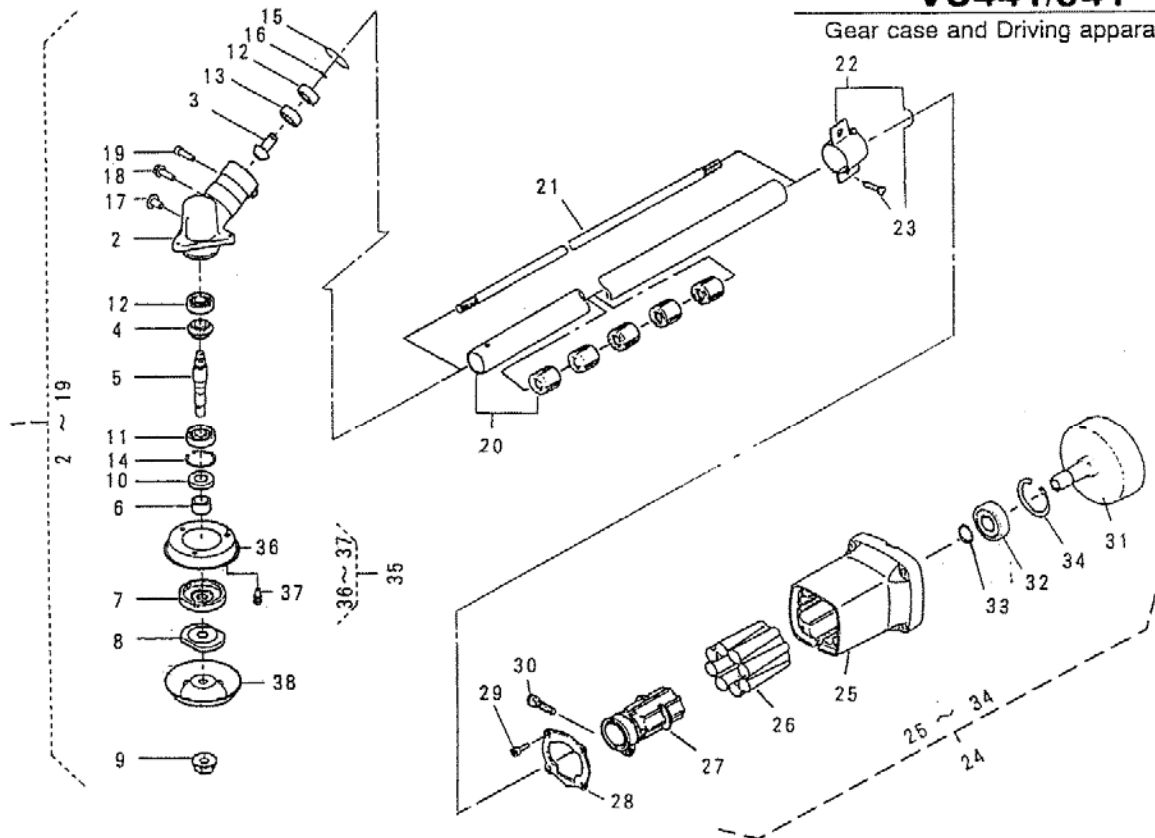


# VS441/541

## Gear case and Driving apparatus



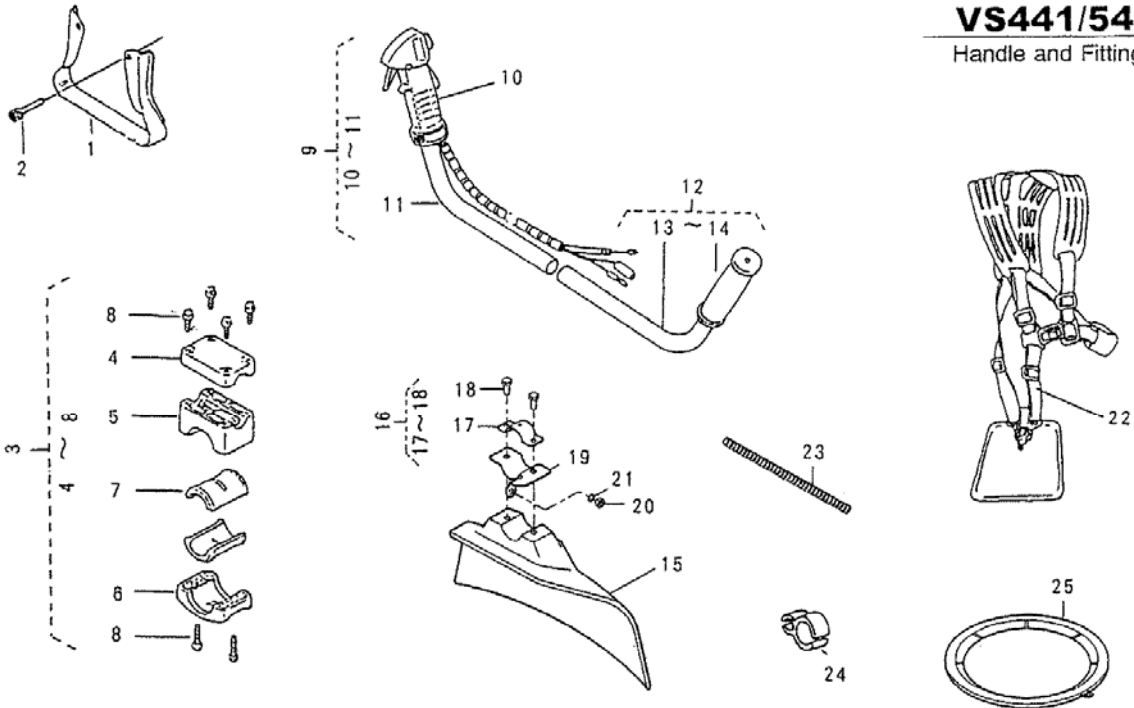
46013-379

REF. NO.	PARTS NO.	PARTS NAME	Q' TY	Aug. 1998		REMARKS
				INCLUDING	RECOMM. (%)	
1	71008 295	GEAR CASE ASS'Y	1			
2	51001 232	GEAR CASE	1			3
3	78002 143	BEVEL PINION	1			5
4	78001 103	BEVEL GEAR	1			5
5	64001 140	SPLINE SHAFT	1			8
6	61001 121	SPLINE SLEEVE	1			10
7	11001 148	HOLDER(A)	1			10
8	11002 115	HOLDER(B)	1			10
9	81001 106	SAW LOCK NUT	1			15
10	61002 107	OIL SEAL TC 20x35x7	1			10
11	919B 6202	BEARING 6202C3	1			4
12	912B 6001	BEARING 6001Z	2			4
13	913B 6001	BEARING 6001	1			4
14	811V 3500	C-SNAP RING FOR HOLE $\phi$ 35	1			5
15	811V 2800	C-SNAP RING FOR HOLE $\phi$ 28	1			5
16	812V 1200	C-SNAP RING FOR SHAFT $\phi$ 12	1			5
17	377L 0810	(+)HEXAGON BOLT M8x10	1			3
18	412U 0630	SOCKET SCREW M6x30	1			3
19	335M 0512	FLANGE BOLT M5x12	1			3
20	71130 126	MAIN PIPE C.P.	1			3
21	64011 159	MAIN SHAFT	1			5
22	71012 138	HANGER BAND ASS'Y	1			3
23	412U 0520	SOCKET SCREW M5x20	1	1		3
24	71010 191 02	CLUTCH CASE ASS'Y	1			-
25	51030 168 02	CLUTCH CASE	1			3



# VS441/541

Handle and Fittings



46013-379

REF. NO.	PARTS NO.	PARTS NAME	Q' TY	Aug. 1998		RECOMM. (%)	REMARKS
				INCLUDING	3 / 3		
1	11024 130 09	STAND	1			10	
2	315L 0630	(+)HEXAGON BOLT(W/SW, PW) M6x30	4			3	
3	71011 145 02	HANDLE JOINT ASS' Y	1			-	
4	51009 139 02	HANDLE JOINT(A)	1			3	
5	51010 142 02	HANDLE JOINT(B)	1			3	
6	51013 119 02	HANDLE JOINT(C)	1			3	
7	36005 151	VIBRO-ISOLATING RUBBER	2			3	
8	423U 0630	SOCKET SCREW FLANGE M6x30	6			3	
9	71014 290	HANDLE ASS' Y	1			-	
10	71056 159	THROTTLE LEVER ASS' Y	1			4	
11	51024 161	DOUBLE HANDLE	1			4	
12	71014 186	HANDLE ASS' Y	1			-	
13	51024 127	DOUBLE HANDLE	1			4	
14	36007 129	HANDLE GRIP	1			4	
15	36046 134	SAFETY GUARD	1			4	
16	71038 158	SAFETY GUARD BAND SET	1			-	
17	11029 130	SAFETY GUARD BAND	1			4	
18	312L 0620	HEXAGON BOLT(W/SW) M6x20	2			3	
19	11029 131	SAFETY GUARD BAND	1			4	
20	512L 0600	HEXAGON NUT M6	1			3	
21	661L 0600	SPRING LOCK WASHER M6	1			3	
22	36063 192	SHOULDER BAND	1			4	
23	41003 126	TUBE	1			3	
24	51002 110	WIRE HOLDER	1			3	
25	36044 107	BLADE COVER	1			3	